



KEYSTONE® TRAVERSE

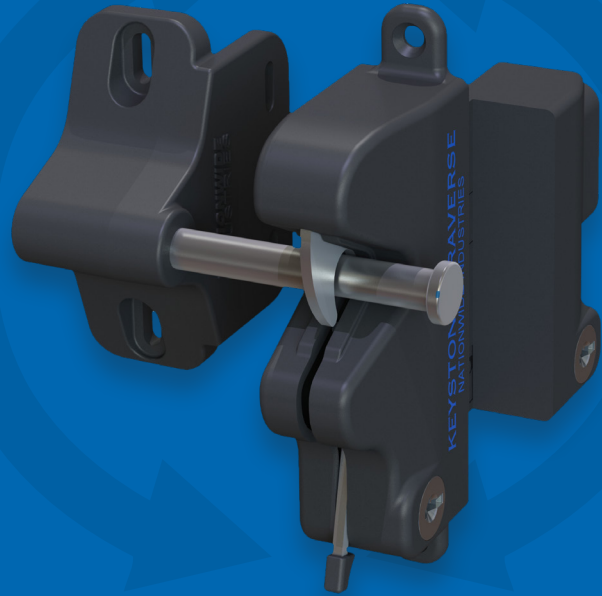
EASIEST LATCH YOU WILL EVER INSTALL

- Easy to install
- For 2" fence posts
- No drilling holes through your posts
- Locks and unlocks from both sides
- Time saver for your installers

LEFT OR RIGHT SIDE APPLICATION

Left-Handed Gate

Right-Handed Gate



INSTALL IN 4 EASY STEPS

1

Determine left or right application

2

Determine latch height

3

Attach the latch to the post using (4) flat head screws

4

Attach keeper

Part Number	Description	Count	Case Weight (lbs)
KLTRV-20L-SD-BK	Traverse Latch, Left handed with Self Drilling Screws, for 2" fence posts, Black	20 per box	35
KLTRV-20R-SD-BK	Traverse Latch, Right handed with Self Drilling Screws, for 2" fence posts, Black	20 per box	35

